

---

# GROTON MASTER PLAN 2024

## February 6, 2024 - Second Community Forum

- Afternoon Session: 2:30-3:30PM
- Evening Session: 7:00-8:00PM



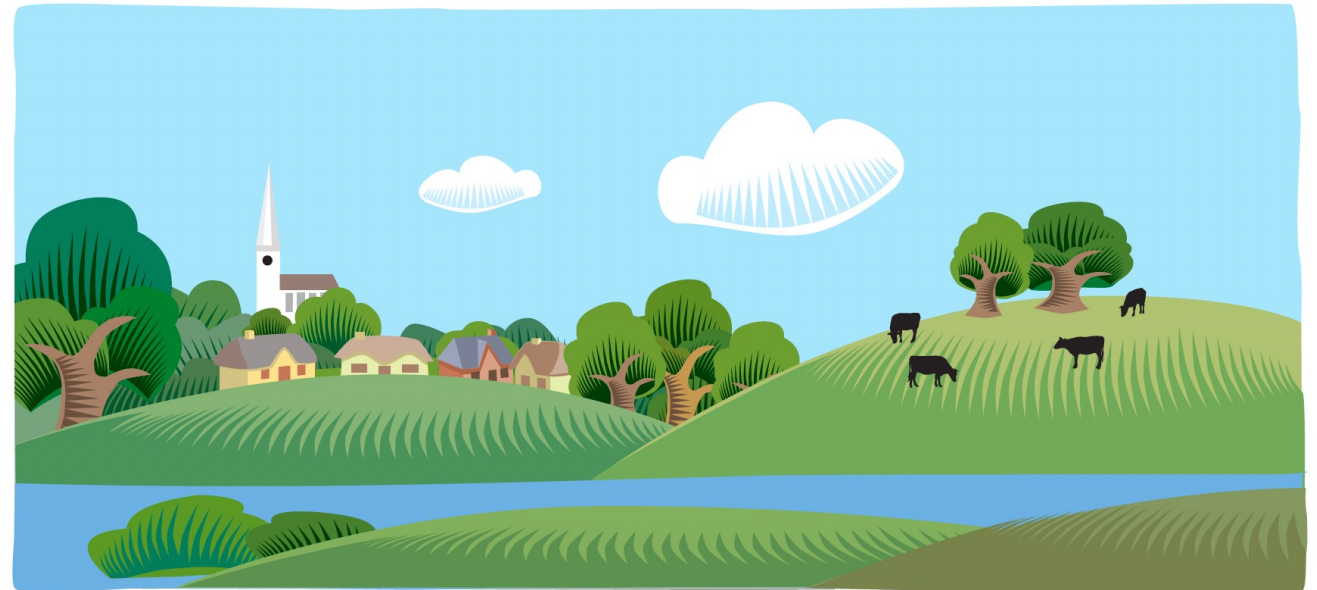
# Today's Agenda

## Introductory Presentation:

- Master Plan Overview
- Groton's Timeline
- Inventory & Assessment Summary

## Open House:

- Interactive Poster Stations



Graphic by Scott Wilson

# What is a Master Plan?

- Long-term 10-15 year plan
- Groton's last Master Plan was adopted in 2011
- Broken up into chapters:
  - Articulates a vision for the future – a basis for future decision-making
  - Summarizes current conditions
  - Provides key issues, recommendations, and implementation plan

## Where is our data from?

- American Community Survey 2021
- Census 2020
- Other official federal/state data sources
- MassGIS
- Assessor's Records
- Annual Town Reports
- Past plans & studies
- Interviews with Town boards/committees
- Public meetings & survey
- And more!

# Inventory & Assessment Elements

## Housing

Existing housing stock, local real estate market, and affordable housing issues.

## Open Space & Recreation

Publicly accessible recreation sites and programs.

## Land Use

Assess existing development trends and settlement patterns.

## Transportation

Focus on issues with traffic, circulation, and multimodal safety

## Economic Development

Evaluates the potential for economic development, and constraints.

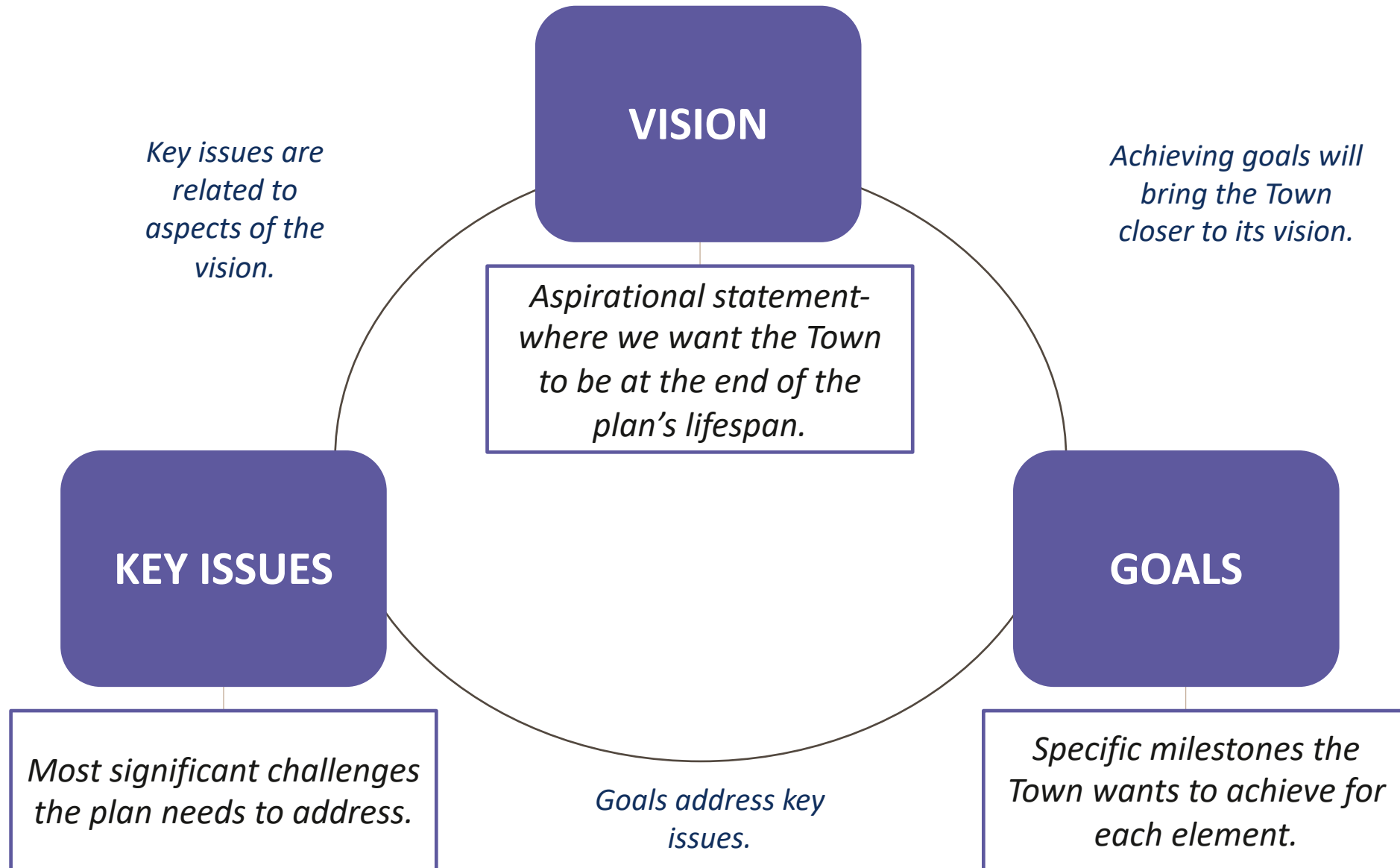
## Natural & Cultural Resources

Review of protected and sensitive land; historic sites and resources.

## Community Facilities & Services

Town-owned property or structures; public utilities; governmental budget.

# Vision, Goals, & Key Issues

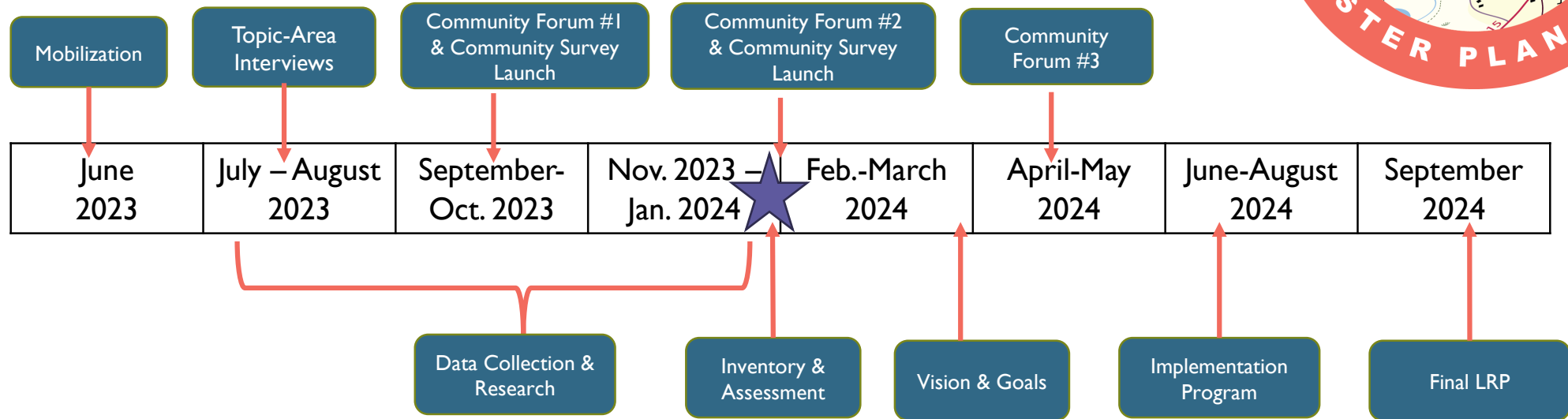


# Implementation Plan

- Specific, measurable actions meant to address key issues and reach goals
- Includes timeframe, responsible parties for each recommendation



# GROTON MASTER PLAN TIMELINE OVERVIEW



Consultant team to attend Groton Planning Board meetings most 2<sup>nd</sup> Thursdays of the month, with a few exceptions.  
Scope to be completed by September 30, 2024.



The background features a vibrant, multi-colored pattern of vertical stripes in shades of blue, teal, orange, yellow, and grey. Overlaid on these stripes are stylized human figures, each represented by a rounded rectangular body and a circular head, all in various colors matching the stripes. The figures are arranged in a grid-like fashion, creating a sense of a diverse group of people.

**Inventory & Assessment  
Section Summary:**  
Demographic Profile & Statistics

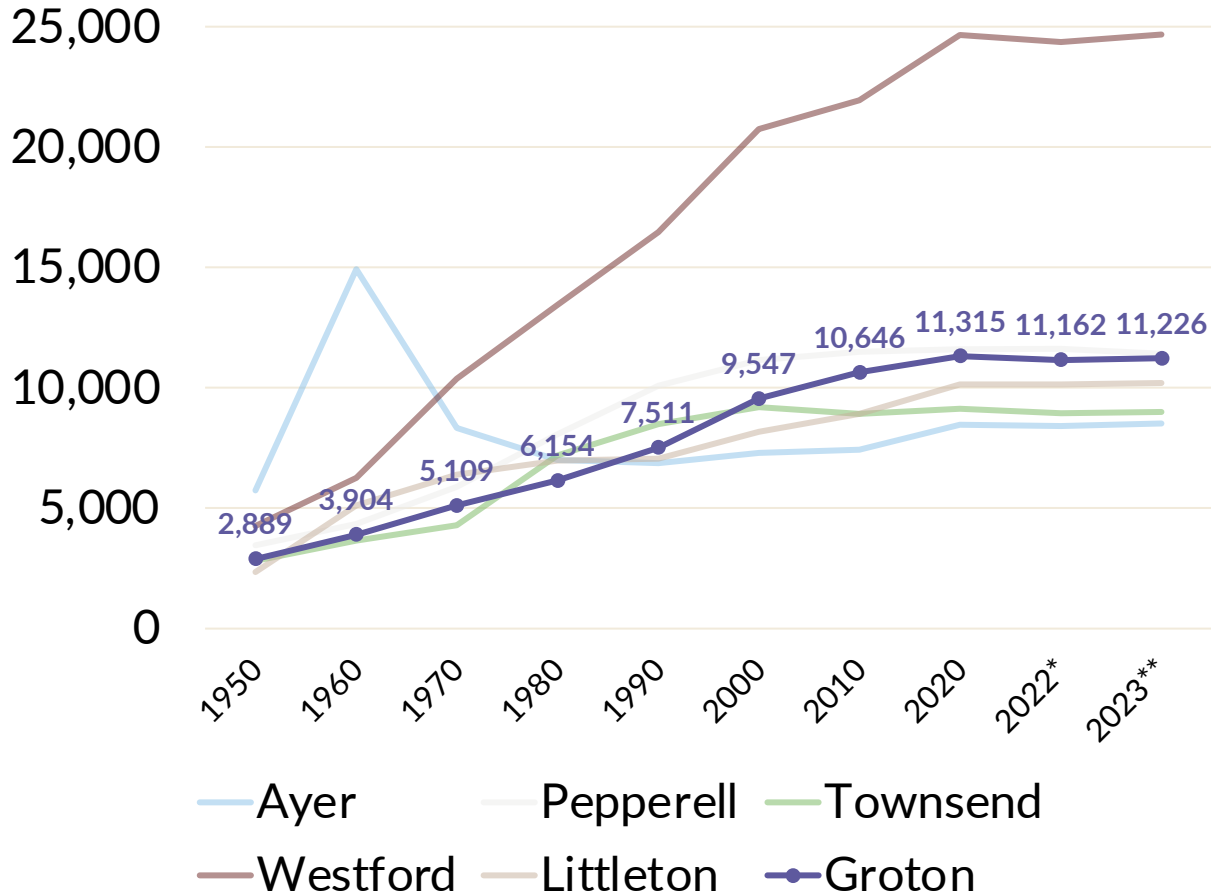
---



# Population

## Population Trends by Community

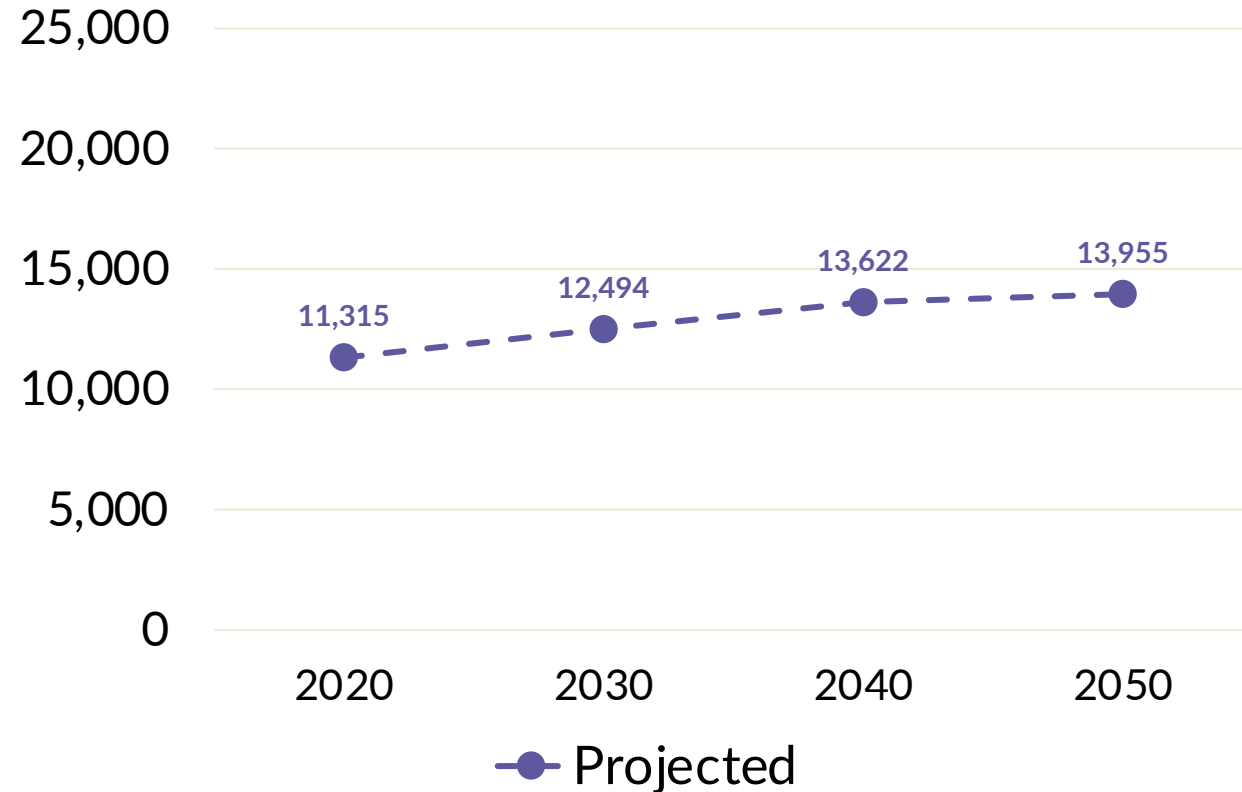
Source: U.S. Decennial Census, 1950-2020;  
 \*UMass Donahue Institute; \*\*FXM Associates



Asterisks indicated estimates from respective sources.

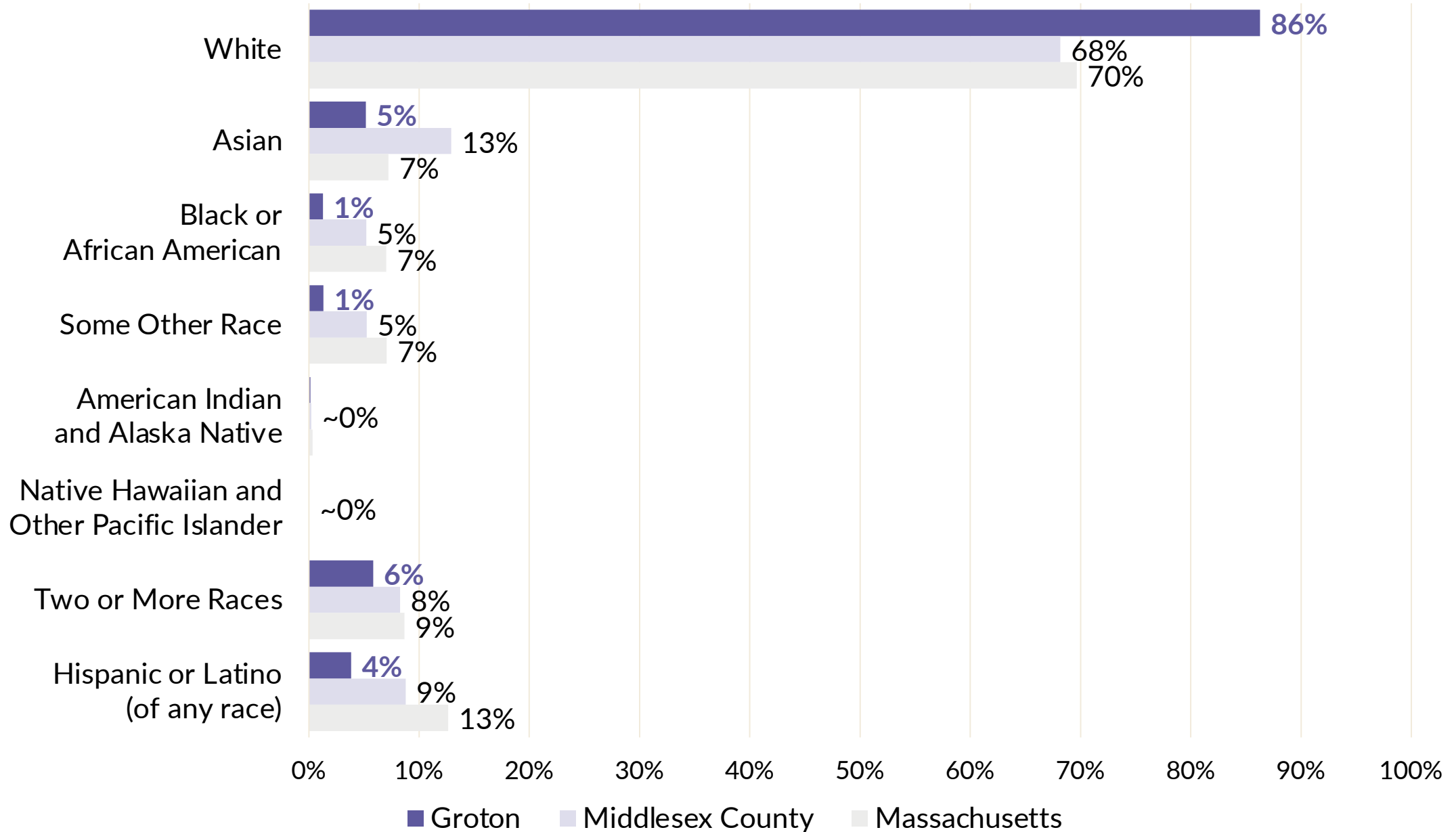
## Projected Population in Groton

Source: U.S. Decennial Census, 1950-2020; UMass Donahue Institute, Population Projections, 2030-2050.



# Demographics

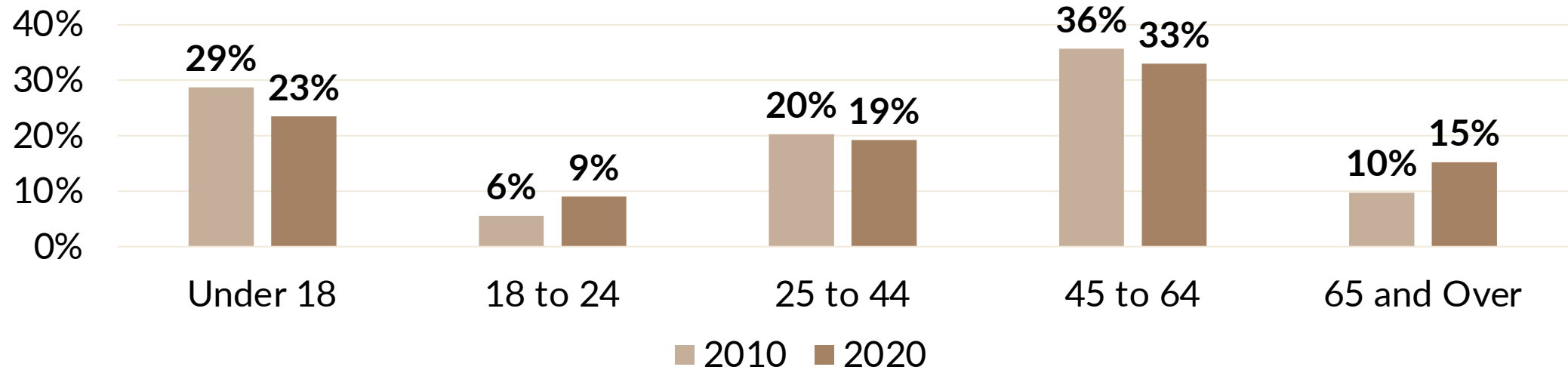
Race and Ethnicity in Groton  
Source: U.S. Decennial Census, 2020



# Demographics

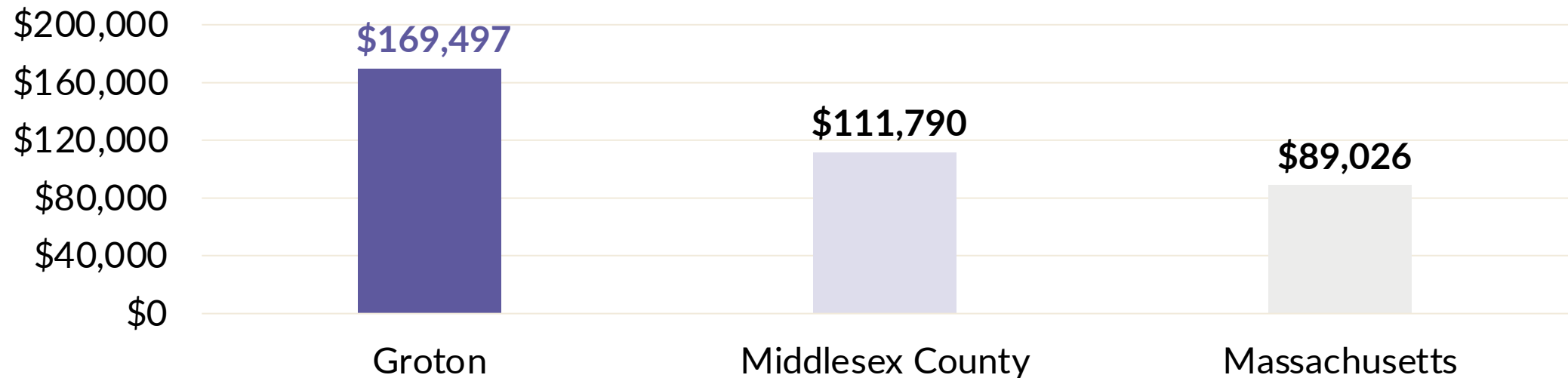
## Change in Age Groups in Groton

Source: U.S. Decennial Census, 2020

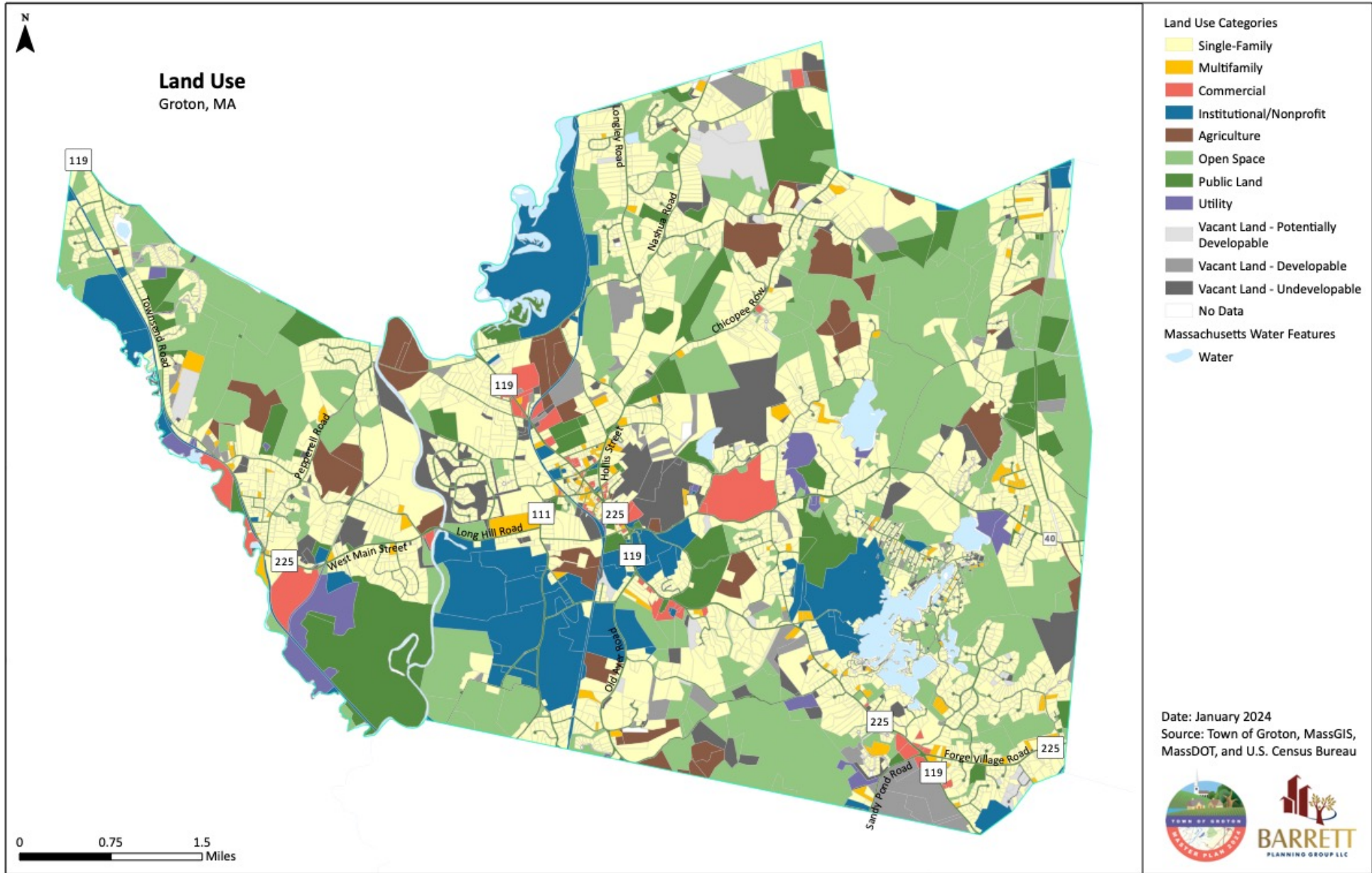


## Median Household Income in Groton

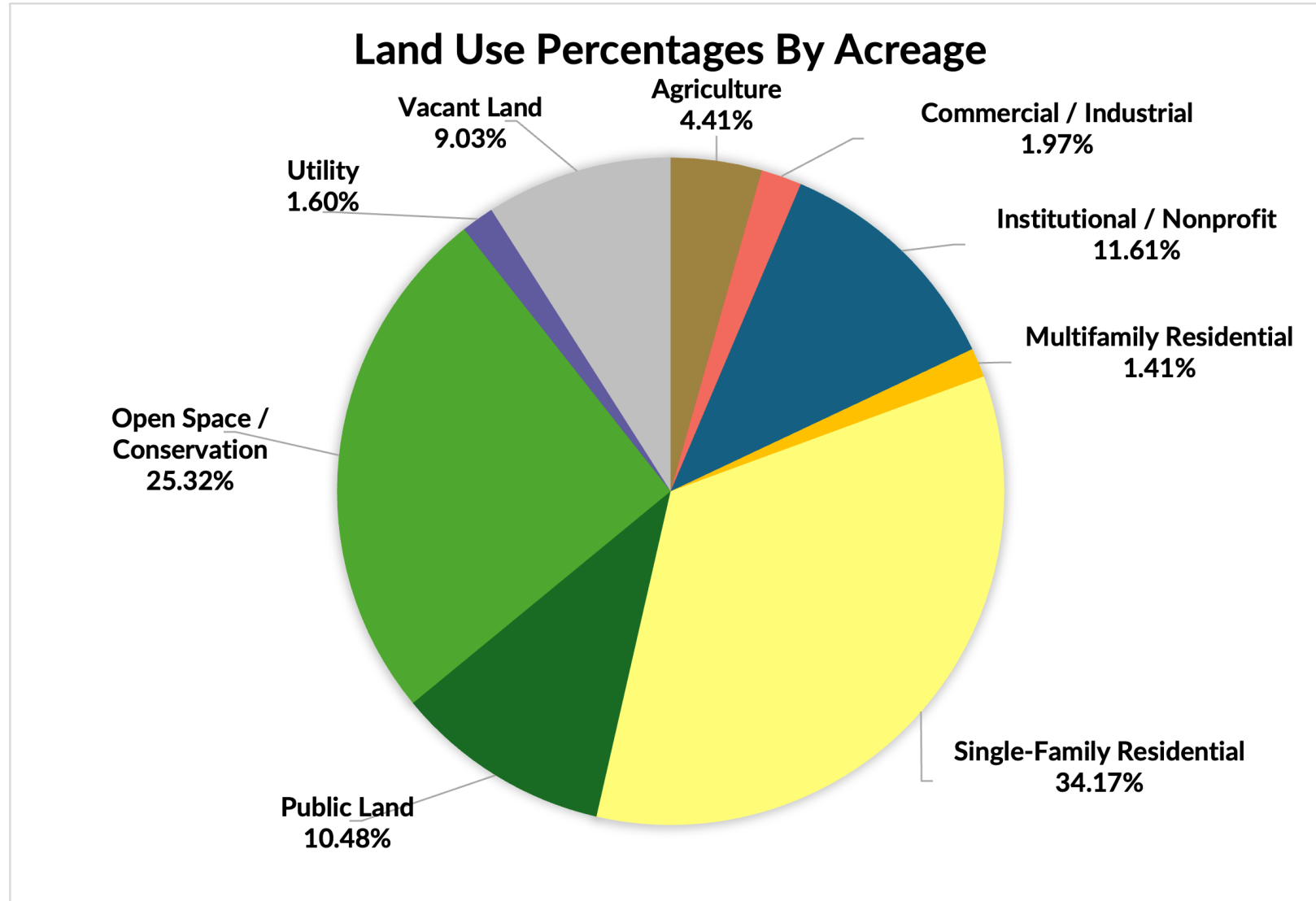
Source: U.S. Census Bureau, American Community Survey Five-Year Estimates, 2021 Table B19013



# Land Use



# Land Use Percentage Breakdown



# Natural Resources & Open Space

- Unique variety of glacial features
- Drumlins, rivers, ponds, brooks, wetlands, vernal pools, forests, and grasslands are critical recreational, ecological, and aesthetic resources
- 68.1% of Groton is Core Habitat
- Over 8,000 acres of protected open space



# Cultural Resources

**647** historic resources documented on MACRIS

3

Local Historic Districts

Properties on the National Registry of Historic Places

7

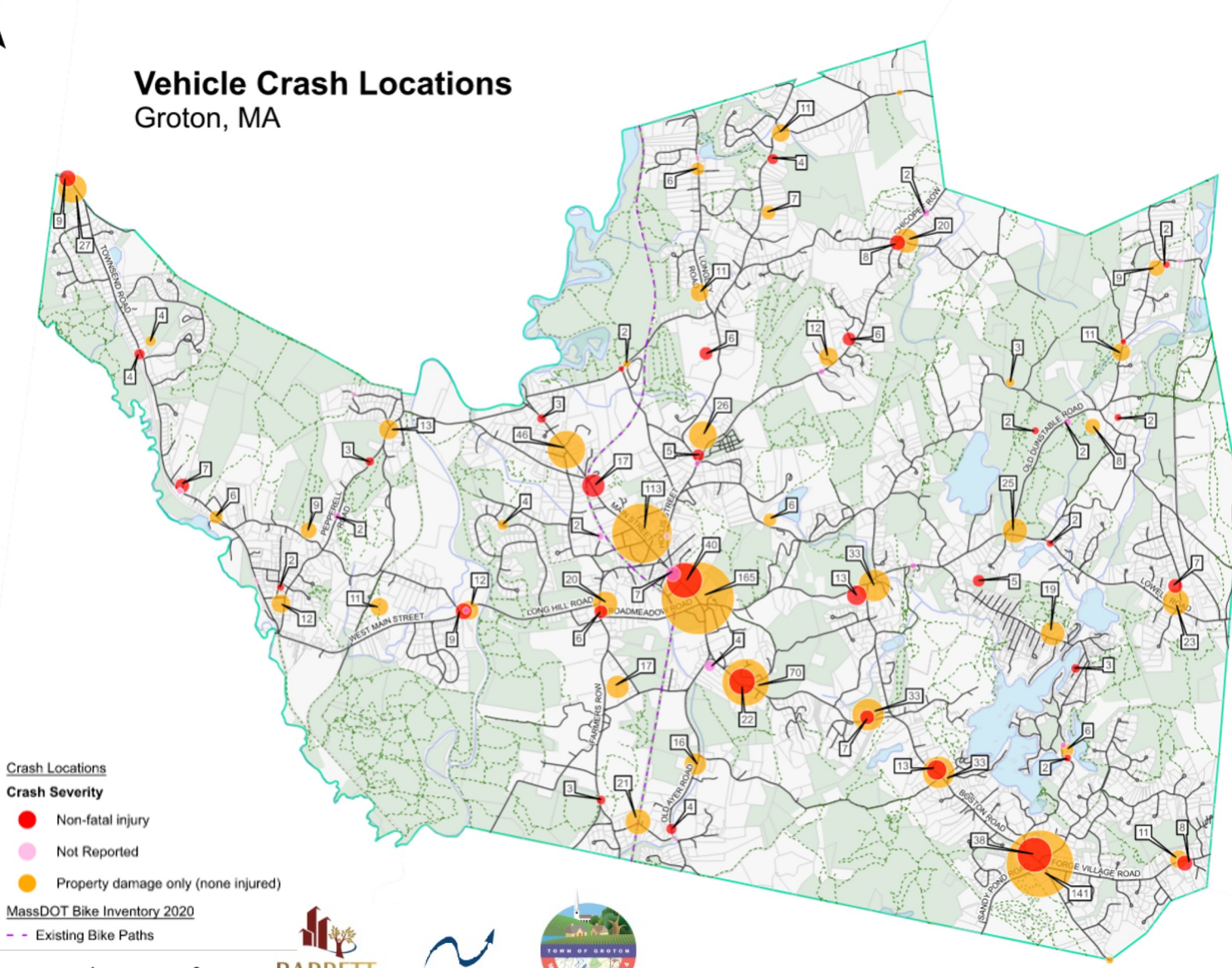
4

Properties with Preservation Restrictions



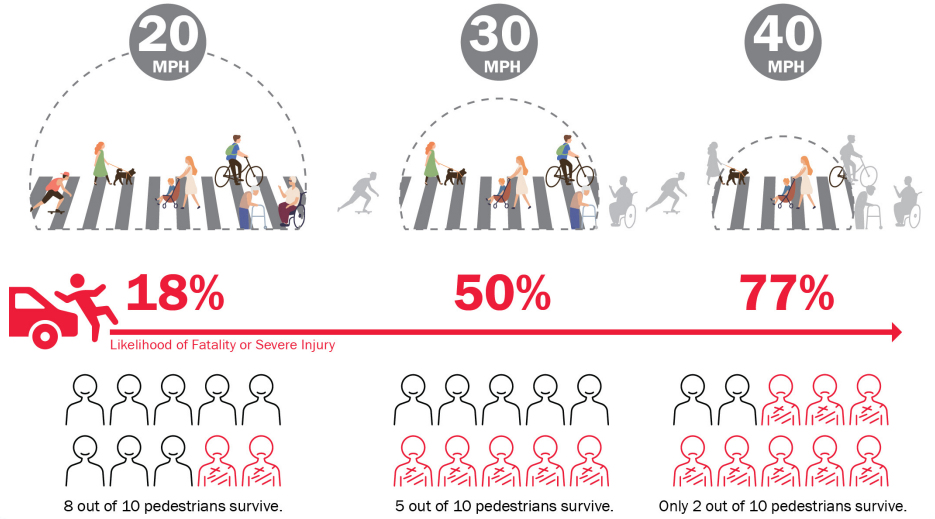
# Transportation

## Vehicle Crash Locations Groton, MA



- Crash clusters along Rt.119/Main St., especially at Broadmeadow Rd
- Beyond rail trail, no bicycle infrastructure
- Limited sidewalks, especially in older neighborhoods
- Annual Average Daily Traffic (AADT) had been consistently rising prior to 2020 – post-pandemic is trending upwards again

### Higher Speeds Reduces Driver's Field of Vision



### Higher Speeds Significantly Increase Likelihood of Fatality or Severe Injury

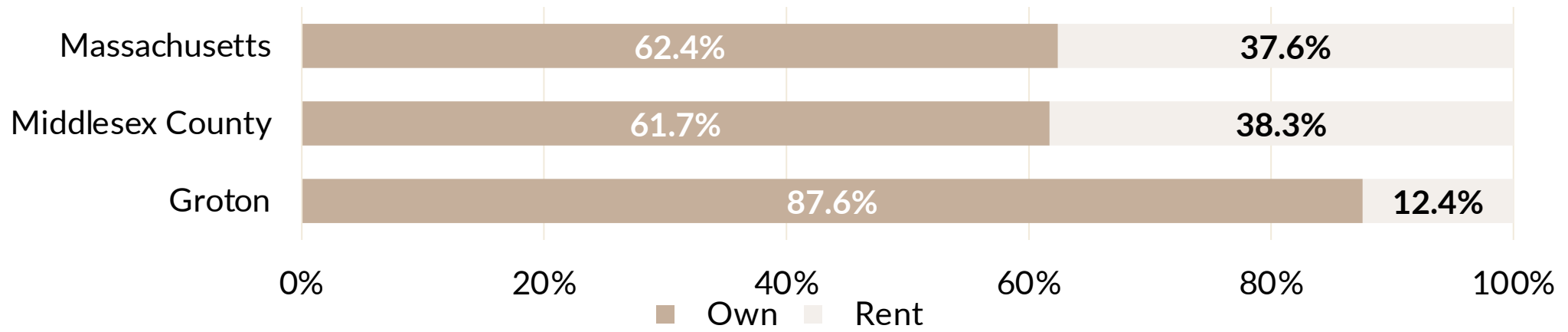




# Housing Characteristics

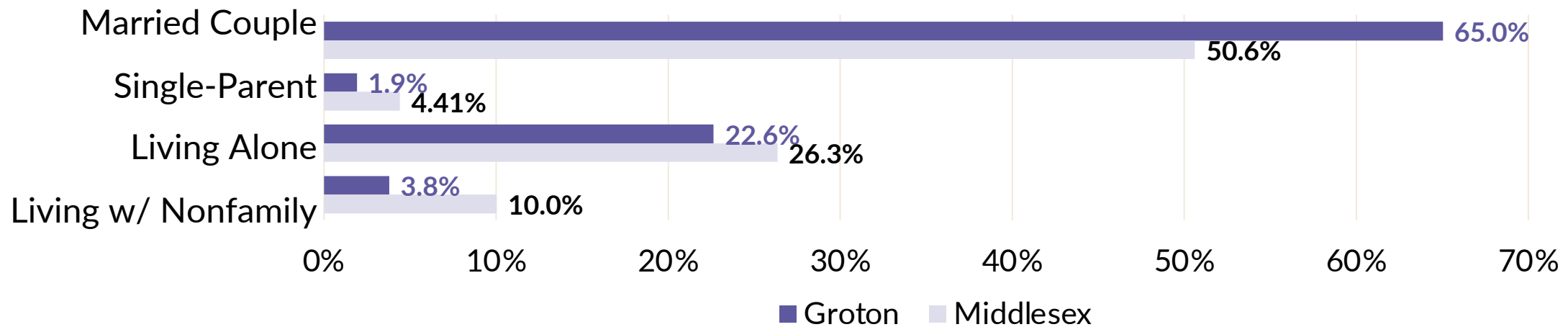
## Housing Tenure in Groton

Source: U.S. Census Bureau, American Community Survey Five-Year Estimates, 2021  
Table B25003



## Household Type in Groton

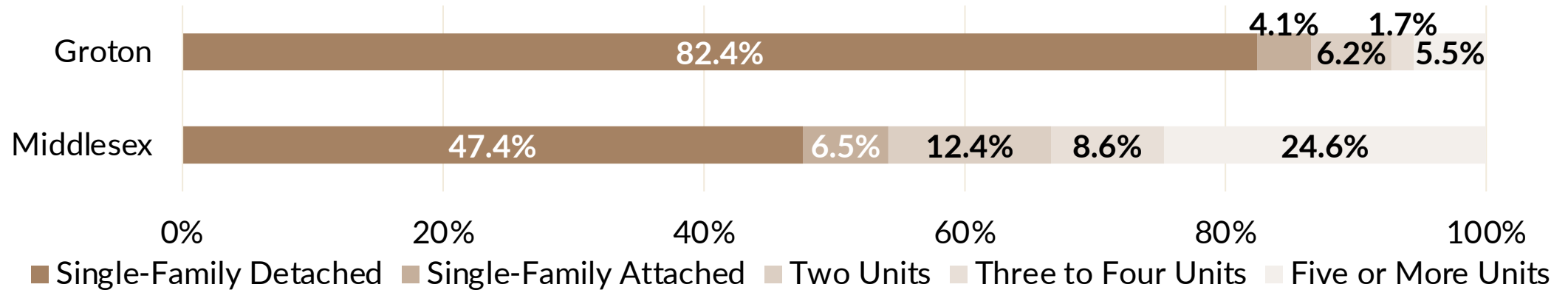
Source: U.S. Census Bureau, American Community Survey Five-Year Estimates, 2021  
Tables B11012 and B11016



# Housing Stock

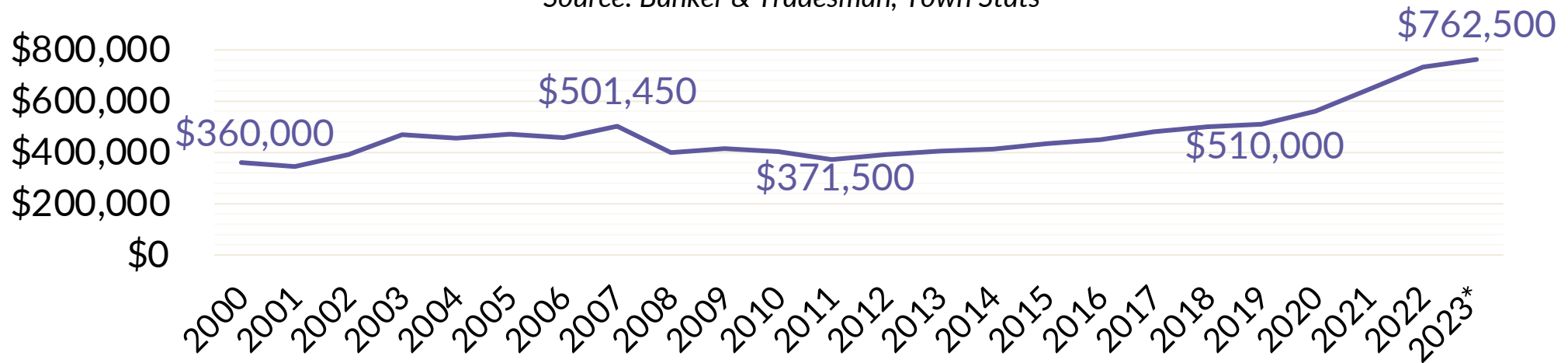
## Housing Unit Types in Groton

Source: U.S. Census Bureau, American Community Survey Five-Year Estimates, 2021  
Table B25024



## Median Sales Price of Single-Family Homes in Groton

Source: Banker & Tradesman, Town Stats



\*January to November.

# Economic Development

- Worker shortages amid an aging workforce pose challenges to fiscal sustainability
- Retail opportunity gap & surplus analysis suggests Groton has potential to support an expanded retail sector
- Favorable commercial tax rates compared to surrounding Towns gives Groton a competitive advantage for attracting businesses, yet lack of commercially zoned land is a hinderance
- Modifications to commercial zoning can unlock untapped potential of the town's commercial tax base



# Community Services



Groton Town Hall



The Center Station | Fire Department



Groton Police Department



Groton Water Department



Groton Electric Light Department (GELD)



Groton Transfer Station



West Groton Water Supply District



Groton Department of Public Works

# Community Facilities



Peter Twomey Youth Center



The Groton Center | Groton Council on Aging



Groton Public Library



Groton Country Club



Groton Dunstable Regional High School



Groton Dunstable Regional Middle School



Florence Roche Elementary School

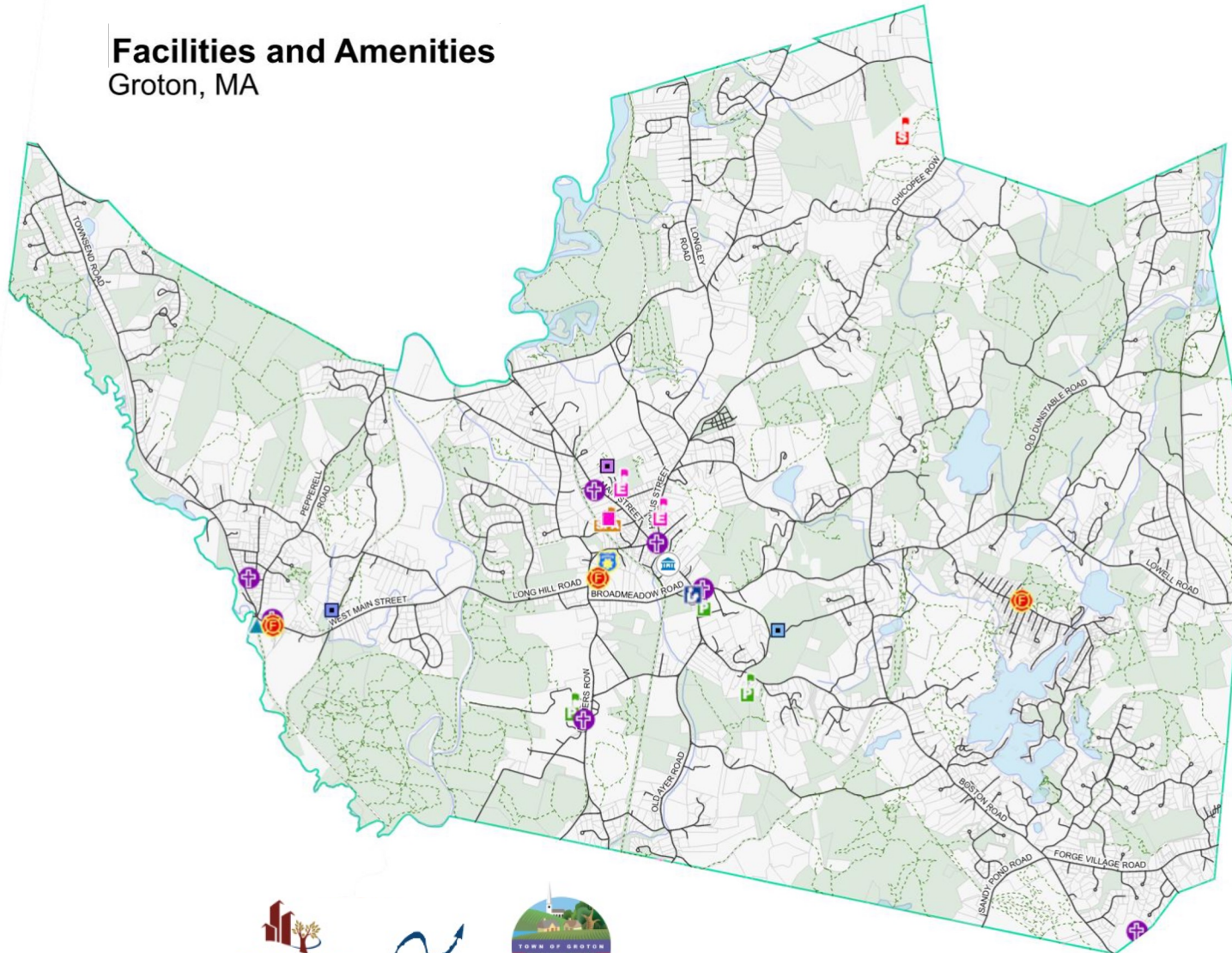


Prescott Community Center

# Facilities and Amenities Map



## Facilities and Amenities Groton, MA



### Public Safety

- Fire Stations
- Local Police

### Long Term Care Facilities

- Assisted Living Residence
- Nursing Home

### Public Amenities

- Groton Country Club
- Groton Senior Center
- Peter Twomey Youth Center
- Groton Public Library

### Places of Worship

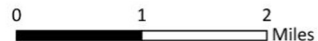
- Church

### Schools

- Private
- Public Elementary
- Public Secondary
- Special Education (Approved)

### Town Hall

- Town Hall





# Open House

Thank you for attending! Please help yourself to refreshments and visit the interactive poster stations to share your thoughts on vision and goal statements for the **2024 Groton Master Plan**.